

# CROSS MOUNTAIN WEST LOOKOUT

10/19/74  
with Kent Sue  
Posner and Odie

122-36

Site	COMPASS BAROMETER p	$\Delta p$	$\Delta e$	e calc	e map	time	R1*
(A) Snyder Hollow Switch	30.56	-0.51			850'		
(B) Trail head	30.05	0.00	—	—	1360'	9:37 AM	(E)* 2649' - 1360'
(C) OAK-HEMLOCK point	29.48	0.57	507	1867'	1900'	10:07	(G) 30.05 - "28.60"
(D) enter 1 <sup>st</sup> (?) = big SVbs	28.94	1.11	987	2347	(e-p #10)		(E) 2649'
(E) Lower trail junction	28.60	1.45	1289	2649' ✓	2649'*	11:37	(E) 2649'
(F) Upper trail junction	28.57	1.48	1316	? 2676? (see below)		11:52	(E) 2649'
(G) high pt. on trail	28.52	1.53	1360	2720'		12:30	(E) 2649'
(H) bum? PB, RM, YB	28.54	1.51	1342	2702'	(e-p #676)		(E) 2649'
(J) {Cross Mountain } {West lookout }	28.59	1.46	1298	2657' [Ansoo 2649']		1:00 } 1:15 }	(E) 2649'
(H) bum? ≠	28.54	1.51	1342	2702'	(e-p #676)	1:36	(E) 2649'
(F) Upper junction	28.51	1.54	1369	2729'		2:32 to 2:50	(E) 2649'
(K) top of 1900 bum	28.58	1.47	1307	2667'	(e-p #675)		(E) 2649'
(L) Bog #403	28.60	1.45	1289	2649'		3:10	(E) 2649'
(M) Return to trail.	28.62	1.43	1271	2631'		3:15	(E) 2649'
(N) in 1 <sup>st</sup> ?	28.78	1.27	1129	2489'		3:45	(E) 2649'
(O) in 1 <sup>st</sup> BASR	28.90	1.15	1022	2282'		3:55	(E) 2649'
(C) OAK-HEMLOCK point	29.54	0.57	453	1813'	1900'	4:35	(E) 2649'
(B) Trail head	30.10	-0.05	-44	-1316' error	1360'	5:13	(E) 2649'
(A) Snyder Hollow Switch	30.66	-0.61	-542'	-818' error	850'		(E) 2649'

R1\* from (B) to (E). Elev. of (E) is an average of two values calculated from previous hikes. See next page. Tied into USGS Benchmark "Trail" at 2556 ft.

≠ (J) follows (H) on return; such limit of 10. 28.56 1:45 to 1:50.

(C) This page readings taken from "Compass barometer".  
Next page readings taken from "Ansoo barometer".  
(P) Trail enters bum on ascent 28.63, PB just west of (E).

See p. 122-37 for calc. of R1\*  
Elev. of site = 2649'

122-37

$R_2 = 0.955$

site	AnSCO $\odot$ Barometer	$\Delta p$	$\Delta e$ ↓	e calc	e map	time (See p. 122-36)	$R_2^*$
(A) Snyder Hollow Switch	30.50	-0.43	-411	949??	850'		(B) to (E) $\frac{2649' - 1360'}{30.07' - 28.72'} = \frac{1289'}{1.35''} = 0.955$ ANSCO
(B) Trail head	30.07	0.00	0	—	1360'		
(E) Lower trail junc.	28.72	1.35	1289	2649	2649'*		
(F) Upper trail junc.	28.65	1.42	1356	2716			
(I) Cross Mtn. west lookout	28.72	1.35	1289	2649	same elev. as junc. (E)		
(F) Upper Trail Junc.	28.70	1.37	1308	2668			
(B) Trail head	30.05	0.02	—	—	1360'		
(A) Snyder Hollow Switch	30.60	-0.55	-525	835 <sup>ok</sup>	850'		

Previous calculations of site (E), Lower trail junction with spur to Terrace lead to:

page	elevation
150-4	2677' (M)
150-24	2621' (M)
150-24	2630' (M)
150-43	2641' (V)
122-25	2628' (BB)
$\Sigma$	13197'
n	5
$\bar{x}$	2639.4'

Note: 0.09" change from BM2556'.  
 Note: air pressure rose 0.11" to Terrace USGS Benchmark at 2556'. (E)

With a pressure change measured at 0.09" and at 0.11" from the USGS "Trail" benchmark, use, a median  $\Delta 0.10'' \approx 93$  ft, the median pressure fall over all hikes for 0.10" pressure change  
 $93 + 2556 = 2649'$

(F) Upper junction calcs with new Long Path Trail:  
 2729' and 2716' (2676' is an error). Median: 2723' or 74 ft above lower junc. (E) [2723 - 2649 = 74]

To locate site **I**, end-hike at lookout at west end of Cross Mtn. via bearings to 7 peaks:

122-38

Peak	bearing		reverse bearing back to site <b>I</b> , at 180° opposite
	magnetic <b>X</b>	true <b>Y</b>	
Wittenberg	275°	262°	82° from Witt. to <b>I</b>
Panther	330°	317°	137° from Panther to <b>I</b>
Samuel's Pt.	135°	122°	302°
Ticketeer	105°	92°	272°
Overlook	80°	67°	247°
Mt. Pleasant	45°	32°	212°
Sugarloaf with Cross Mtn summit below	60°	47°	227°

Rule: If **Y** > 180, subtract 180°. If < 180° **Y** add 180°.

Ken Posner's coordinates

42° 01069, - 74° 33056 for the lookout **I**

for Bog #403 **L**

42° 08165, - 74° 34230

Mileage from 2810 to Snyder Hollow Switch via Todd Mtn Rd. = 19.2

Mileage from Snyder Hollow Switch to 2810 via Arkville:

**C** Promontory, narrow, with OAK & OAK repro, and HEMLOCK dom. The only OAK seen until **I**. 1867, 1900'

**D** 2347' Brg SUBS, m1° if Simpson had not barked here

**P** Enter August 1900 burn with PBs (see 28.63)

**F** & **G** between:

NOON - big ASH

12-02 - big PB

12-03± to 12-17 lunch at big boulder on E

12-25 - big hollow ASH

12-29 - 1st STRUCE repro

**G** 2720' 12-30. High pt - on trail betw. **E** and **I** Drop down.

Vegetation

**H** 2702' 12-35. Enter PB, PB area, with RM & SR repro. HEM repro. Possibly another burn? Trail turns E on N shoulder of 2900' knob.

**I** 2657' / 2649' Cross Mtn. West Lookout (ie, above west end of Cross Mtn. The lookout looks mainly to the east. Almost same elev. as Trail June **E**)

Flora:

1 stunted FIR

STRUCE

1 small SORBUS

HEM

PB

VACC BNG.

OAK mainly

on S crest above Travel Hollow

This resembles "Blueberry Conglomerate" site on Terra Mtn. at 2556' B.M.

High ledge to SE into Travel Hollow. Lower ledge to NW & NE.

Trail turns W, then N along & up a ledge with human-built steps, west, south, west with retaining small stones on contour.

NW heading for Wittenberg. 1-30 South jog again. On contour along shoulder of 2900' ridge to the south

**H** 1-36, 2702'. RM, PB-PB (burn?) with SPR & HEM repro

1-45 . leave PB (burn?)

Enter Beech dominance.

Trail turns N along E base of Wittenberg dome.

e-p #676

# Vegetation, Continued

122-39

**J** 1:45. Directly under & closest to Wittenberg dome. Beech dom, few SUB, only the YBs large to 24".

36" hollow ASH at LAP-HYDRO wet spot, fill now dry. OST.

2:07 lunch boulder on E. KAMAMELIS

2:13 YB m talus boulders. One 34 1/2" dbh.

2:23 Broad flat terrace about 40' below on E.

31" SUB,  
30" ASH  
28" SUB

**F** 2746 or 2729' Upper Junction. From here, leave trail & bushwhack NW on a diagonal, passing ---

**K** 2667'. Top of August 1900 burn with PBs in a NEM grove. Just above to SE is a ledge with big boulders.

e.p. # **675**

**L** 2649'. Bag #403 with Sphagnum, NEM, SPRUCE, VACC ANG, JUNCLUS BREVI, CINN. Probes to 20" & 23". RETURN WITH TILE SPADE!!

**M** Return to trail at 16" PB on S side. The trail here follows

along the top of a narrow ledge heading east toward Junction **E**. 2631'

— Pass easternmost rill

3:30 Well into 1°

3:45 **N** 2° or 1°? Uncertain. 2° if barked, 1° if not. Ask Paul Misko for Simpson road here. 2489'

— dry rill

— rill

— rill

— Two 28" SUBs  
30" SUB, 30" NEM.

3:55 **O** 2° or 1°? BASS' 2282'

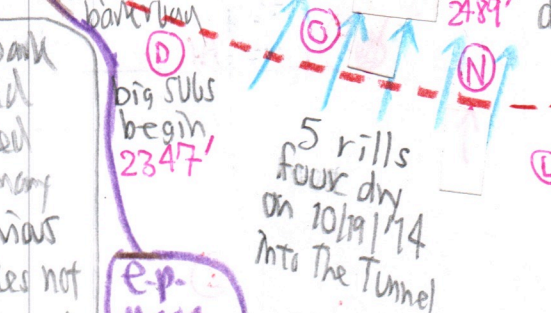
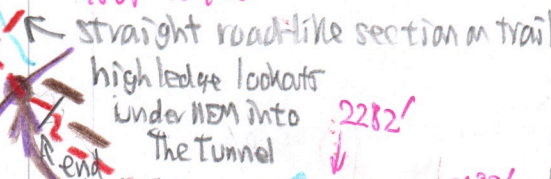
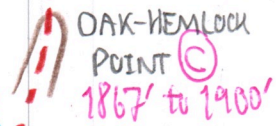
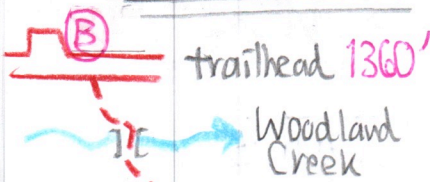
**C** 1867' to 1900' - OAK point NEM cut 3' up to clear trail at 4:50. 200y. 28" diameter

Coördinating sites of this hike with those of 7/17/14, on pages 122-25 ff =

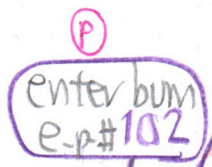
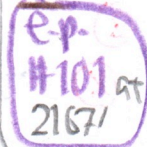
Site	This hike	7/17/14
URGS BM "Trail"	(not visited)	<b>CC</b> 2534' (Should be 2558)
Lower June 2649'	<b>E</b>	<b>BB</b> 2628'
Upper June 2729', 2716'	<b>F</b>	<b>AA</b> 2688'
36" hollow ASH	12:25 PM	<b>Z</b> 2671' 34 1/2" YB
	PM	<b>P</b> 2571' dip in trail
highest pt. on new trail	<b>G</b> 2720'	<b>X</b> 2731'
possible burn	<b>H</b> 2702'	
CROSS MOUNTAIN WEST LOOKOUT	<b>I</b> 2657'	<b>W</b> 2628'

# MAP SKETCH

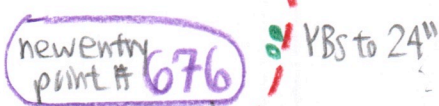
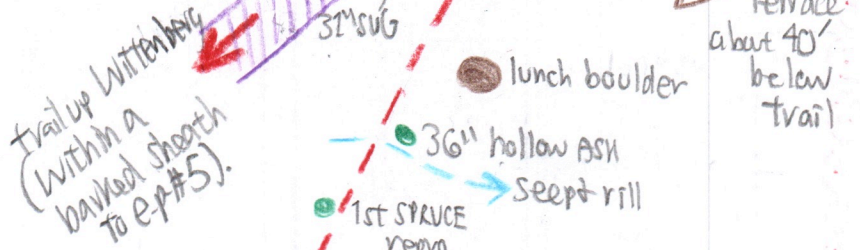
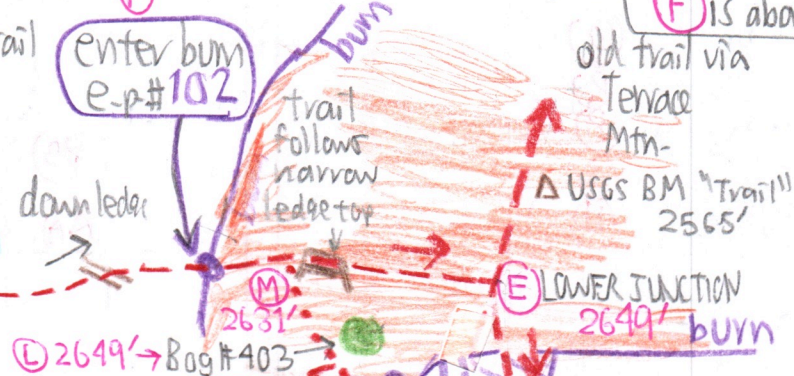
122-40



The bank road hidden on many previous hikes not observed. Why? Hidden by big Hemlock fallen closely alongside the trail? **Yes**



Question: Is site E within or outside the bum? No clear answer from MK field notes. But from memory E is in bum and F is above it



view to Wittenberg summit

